

ANGELO CB5088



DESCRIPTION

Unisex windbreaker with hood. Contrasting centre zip with chin guard and zip pull. Side pockets with zip and reflective piping. Back pocket for storing the garment, with Velcro fastening. Hood with mesh lining and seam covers. Cuffs and hem with contrasting elastic piping.

COMPOSITION

100% polyester, 60 gsm.

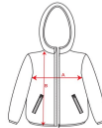
REMARKS

*Removable label. *Windproof design. *Designed to provide effective protection against the elements, with a technical construction that limits airflow and ensures reliable performance in challenging wet conditions. *Available in children's sizes.

SIZES

Adults:: S · M · L · XL · 2XL / Kids:: 4 · 6 · 8 · 10 · 12 · 14

SCHEME



QUANTITIES

	Box	Pack
Adults:	50 un.	1 un.
Kids:	50 un.	1 un.

COLORS



SIZES

Adults:	S	M	L	XL	2XL	
WIDTH (A)	54cm	57cm	60cm	63cm	66cm	
LONG (B)	65cm	68cm	71cm	74cm	77cm	
Kids:	4	6	8	10	12	14
WIDTH (A)	37cm	40cm	43cm	46cm	49cm	52cm
LONG (B)	44cm	47cm	50cm	53cm	56cm	59cm

PRINTING TECHNIQUES AVAILABLE



Handling

*[Measured from the edge 1 cm below the sleeves / Measured from the highest point of the shoulder to the end of the garment]

